

Real Time Tomography, LLC

Improving Diagnostic Accuracy and Clinical Workflow

Company

Real Time Tomography is a Pennsylvania-based medical imaging company developing state-of-the-art imaging software solutions. Our mission is to save lives and reduce health care costs by developing technically innovative products that increase diagnostic accuracy and improve clinical workflow. Our products are marketed to original equipment manufacturers (OEMs) developing next-generation medical imaging systems.

Products

Our OEM products are designed as software libraries that can be easily incorporated into new and existing medical imaging systems. Licensed on a per-unit basis, our software offers manufacturers a shorter product time-to-market at lower costs.

Adara™ is a 2D image processing and enhancement software for Digital Mammography. Fast, flexible and easy-to-integrate, Adara improves image quality for a more accurate diagnosis.

Briona™ is a 3D image reconstruction software for Digital Breast Tomosynthesis. This market-ready product has been successfully implemented for various tomosynthesis systems and enables manufacturers to enhance their current products with advanced 3D capability.

Piccolo™ is a clinical research workstation for digital tomosynthesis. Piccolo is currently being used by academic researchers investigating tomosynthesis image design and optimization. Piccolo's prototype and reconstruction features enables rapid design and refinement of tomosynthesis imaging systems.

Services

Real Time Tomography provides consulting and technical expertise on image quality, image processing and image reconstruction. We provide analysis and recommendations on system design that will improve image quality. We are dedicated to providing superior service for the seamless integration of our OEM products into manufacturers' systems.

Technology

Real Time Tomography is focused on imaging research and development and has an extensive patent portfolio in the area of tomosynthesis imaging. We collaborate with companies and academic research institutions to develop innovative methods that advance the reconstruction, processing, display and review of digital images.

Our patented core technology, Dynamic Reconstruction and Rendering™ (DRR), is real-time image reconstruction on-demand with super-resolution. DRR provides more diagnostic information than conventional 3D imaging methods. DRR has been applied to both medical applications, such as breast and body tomosynthesis, and non-medical applications, such as nuclear tomography, non-destructive testing and security.

FACT SHEET

Real Time Tomography, LLC

1709 Balsam Lane

Villanova, PA 19085

+1-484-234-2228

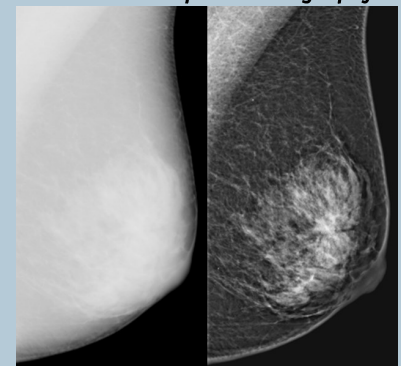
Susan Ng, CEO

info@realtimetomography.com

www.realtimetomography.com

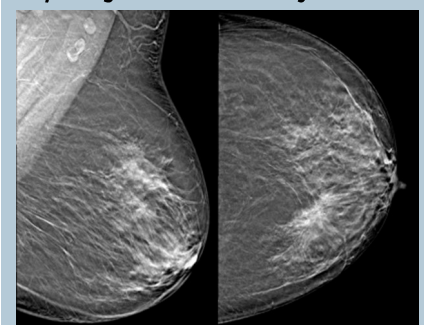
Founded in 2007, our team of scientists, engineers and professionals has worked extensively in the medical imaging industry for the past 30 years developing market-leading products. Our engineering development process is disciplined from many years of proven experience in creating medical systems software.

Adara™, 2D Image Processing and Enhancement for Mammography



Unprocessed mammogram (left)
Adara-enhanced mammogram (right)

Briona™, 3D Image Reconstruction for Digital Breast Tomosynthesis



Digital breast tomosynthesis images reconstructed from projection images by the Briona software.